

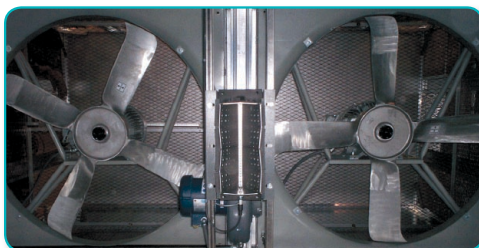
The E-Series

Direct-Fired Air Turnover: Performance & Selection

Model	MBH Output	Min. Gas Pressure (in. w.c.) at Unit ¹	Airflow (CFM)	Supply Fan Qty.	Combustion Fan Hp ²	Supply Fan Hp ³	Total BHp ⁴	Electrical Connection, amps			
								MCA 460/3	MOP 460/3	MCA 208/3	MOP 208/3
E1-4-10	400	6.5	10,000	1	1/2	2	1.69	7.0	10.0	13.8	20.0
E1-4-15	400	6.5	15,000	1	3/4	3	3.12	9.3	12.0	18.9	30.0
E1-6-15	600	5.9	15,000	1	3/4	3	3.14	9.3	12.0	18.9	30.0
E2-4-20	400	6.5	20,000	1	3/4	5	3.93	13.0	20.0	27.1	40.0
E2-6-20	600	5.9	20,000	1	1	5	4.10	13.5	20.0	28.2	40.0
E2-6-25	600	5.9	25,000	1	1	5	5.60	13.5	20.0	28.2	40.0
E2-8-15	800	9.1	15,000	1	3/4	3	2.86	9.3	12.0	18.9	30.0
E2-8-20	800	9.1	20,000	1	1-1/2	5	4.35	14.0	20.0	29.3	40.0
E2-8-25	800	9.1	25,000	1	1-1/2	5	5.84	14.0	20.0	29.3	40.0
E2-10-20	1,000	13.5	20,000	1	1-1/2	5	4.33	14.0	20.0	29.3	40.0
E2-10-25	1,000	13.5	25,000	1	2	5	6.27	14.4	20.0	30.2	40.0
E3-8-30	800	9.1	30,000	1	2	7-1/2	7.12	17.9	25.0	37.9	60.0
E3-8-35	800	9.1	35,000	1	3	7-1/2	9.15	19.0	25.0	40.3	60.0
E3-10-30	1,000	13.5	30,000	1	2	7-1/2	7.42	17.9	25.0	37.9	60.0
E3-10-35	1,000	13.5	35,000	1	3	7-1/2	9.15	19.0	25.0	40.3	60.0
E3-15-25	1,500	13.1	25,000	1	1-1/2	5	5.34	14.0	20.0	29.3	40.0
E3-15-30	1,500	13.1	30,000	1	2	7-1/2	7.42	17.9	25.0	37.9	60.0
E3-15-35	1,500	13.1	35,000	1	3	7-1/2	9.15	19.0	25.0	40.3	60.0
E4-10-40	1,000	13.5	40,000	2	1-1/2	3	7.12	15.4	20.0	32.3	40.0
E4-10-45	1,000	13.5	45,000	2	2	5	8.69	22.5	30.0	48.0	60.0
E4-15-40	1,500	13.1	40,000	2	1-1/2	3	7.12	15.4	20.0	32.3	40.0
E4-15-45	1,500	13.1	45,000	2	2	5	8.69	22.5	30.0	48.0	60.0
E4-15-50	1,500	13.1	50,000	2	3	5	10.33	23.6	30.0	50.5	60.0
E4-20-35	2,000	13.9	35,000	2	1-1/2	3	6.36	15.4	20.0	32.3	40.0
E4-20-40	2,000	13.9	40,000	2	1-1/2	3	7.12	15.4	20.0	32.3	40.0
E4-20-45	2,000	13.9	45,000	2	2	5	8.69	22.5	30.0	48.0	60.0
E4-20-50	2,000	13.9	50,000	2	3	5	10.33	23.6	30.0	50.5	60.0
E4-20-55	2,000	13.9	55,000	2	3	5	11.69	23.6	30.0	50.5	60.0
E4-25-50	2,500	13.0	50,000	2	3	5	10.33	23.6	30.0	50.5	60.0
E4-25-55	2,500	13.0	55,000	2	3	5	11.75	23.6	30.0	50.5	60.0
E4-25-60	2,500	13.0	60,000	2	3	7-1/2	11.76	29.9	40.0	64.3	80.0
E4-30-60	3,000	11.5	60,000	2	3	7-1/2	11.76	29.9	40.0	64.3	80.0

Notes:

1. Maximum Gas Pressure is 28" w.c., 16 ounces or 1.0 pound for all unit burners.
2. Combustion Blower Horsepower (Hp) is based on using 25'-0" of inlet duct for outside air at 10°F and 750' elev.
3. Supply Fan Horsepower (Hp) is per fan with inlet filters. Cooling coils may increase Fan Hp requirements.
4. Total Brake Horsepower (BHp) is the sum of Combustion Blower BHp and Supply Fan BHp.



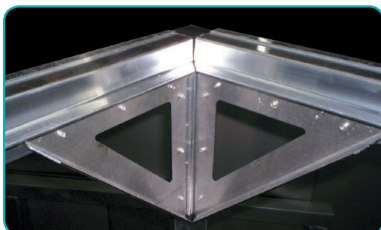
E-Series units (E4) with high-airflow capacity are equipped with dual direct-drive axial fans, both VFD-controlled for variable-volume supply air.

Performance & Selection - Continued

Model	MBH Output	Min. Gas Pressure (in. w.c.) at Unit ¹	Airflow (CFM)	Supply Fan Qty.	Combustion Fan Hp ²	Supply Fan Hp ³	Total BHp ⁴	Electrical Connection, amps			
								MCA 460/3	MOP 460/3	MCA 208/3	MOP 208/3
E5-20-60	2,000	13.9	60,000	2	3	5	11.38	23.6	30.0	50.5	60.0
E5-25-60	2,500	13.0	60,000	2	3	5	11.20	23.6	30.0	50.5	60.0
E5-30-60	3,000	11.6	60,000	2	3	5	10.92	23.6	30.0	50.5	60.0
E5-35-60	3,500	12.3	60,000	2	3	5	9.72	23.6	30.0	50.5	60.0
E5-25-70	2,500	13.0	70,000	2	3	7-1/2	14.13	29.9	40.0	64.3	80.0
E5-30-70	3,000	11.6	70,000	2	3	7-1/2	13.91	29.9	40.0	64.3	80.0
E5-35-70	3,500	12.3	70,000	2	3	7-1/2	13.75	29.9	40.0	64.3	80.0
E5-40-70	4,000	13.2	70,000	2	3	7-1/2	13.53	29.9	40.0	64.3	80.0
E5-30-80	3,000	11.6	80,000	2	5	7-1/2	17.19	32.1	40.0	69.2	90.0
E5-35-80	3,500	12.3	80,000	2	5	7-1/2	16.93	32.1	40.0	69.2	90.0
E5-40-80	4,000	13.2	80,000	2	5	7-1/2	16.75	32.1	40.0	69.2	90.0
E5-45-80	4,500	14.4	80,000	2	5	7-1/2	16.51	32.1	40.0	69.2	90.0
E5-35-90	3,500	12.3	90,000	2	5	10	22.14	38.9	50.0	84.0	110.0
E5-40-90	4,000	13.2	90,000	2	5	10	21.86	38.9	50.0	84.0	110.0
E5-45-90	4,500	14.4	90,000	2	5	10	21.58	38.9	50.0	84.0	110.0
E5-50-90	5,000	13.3	90,000	2	5	10	21.30	38.9	50.0	84.0	110.0
E6-45-90	4,500	14.4	90,000	2	5	10	18.98	38.9	50.0	84.0	110.0
E6-50-90	5,000	13.3	90,000	2	5	10	18.82	38.9	50.0	84.0	110.0
E6-45-100	4,500	14.4	100,000	2	7-1/2	10	22.83	41.5	50.0	89.7	120.0
E6-50-100	5,000	13.3	100,000	2	7-1/2	10	22.57	41.5	50.0	89.7	120.0
E6-55-100	5,500	13.9	100,000	2	7-1/2	10	22.37	41.5	50.0	89.7	120.0
E6-60-100	6,000	14.9	100,000	2	7-1/2	10	22.09	41.5	50.0	89.7	120.0
E6-50-110	5,000	13.3	110,000	2	7-1/2	15	27.44	57.7	60.0	125.4	170.0
E6-55-110	5,500	13.9	110,000	2	7-1/2	15	27.14	57.7	60.0	125.4	170.0
E6-60-110	6,000	14.9	110,000	2	7-1/2	15	26.92	57.7	60.0	125.4	170.0
E6-65-110	6,500	12.6	110,000	2	7-1/2	10	26.62	41.5	50.0	89.7	120.0
E6-55-120	5,500	13.9	120,000	2	7-1/2	15	30.22	57.7	60.0	125.4	170.0
E6-60-120	6,000	14.9	120,000	2	7-1/2	15	29.88	57.7	60.0	125.4	170.0
E6-65-120	6,500	12.6	120,000	2	7-1/2	15	29.64	57.7	60.0	125.4	170.0
E6-70-120	7,000	12.9	120,000	2	7-1/2	15	29.32	57.7	60.0	125.4	170.0

Notes:

1. Maximum Gas Pressure is 28" w.c., 16 ounces or 1.0 pound for all unit burners.
2. Combustion Blower Horsepower (Hp) is based on using 25'-0" of inlet duct for outside air at 10°F and 750' elev.
3. Supply Fan Horsepower (Hp) is per fan with inlet filters. Cooling coils may increase Fan Hp requirements.
4. Total Brake Horsepower (BHp) is the sum of Combustion Blower BHp and Supply Fan BHp.

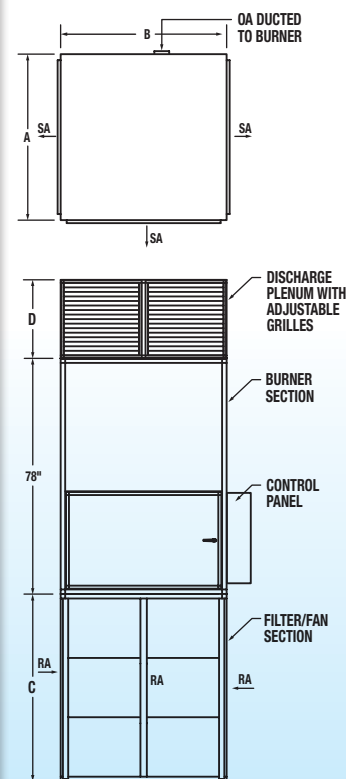


Robust E-Series construction has a specially profiled tubular aluminum frame, unique corner bracing and corrosion resistant aluminum or aluminized-steel sheathing.

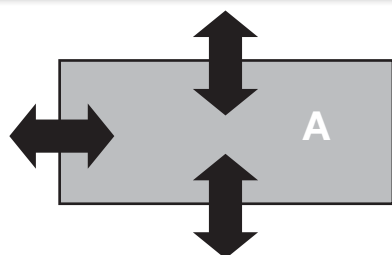
The E-Series

Direct-Fired Air Turnover: Dimensional Data

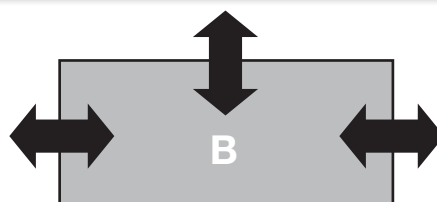
Model	Fan Size In. Dia.	Supply Air Fan Qty.	Dim. A Inches	Dim. B Inches	Dim. C, inches				Dim. D, inches				Gas Inlet, IPS	Outside Air Duct, In. Dia.
					Return on 4 Sides	Return on 3 Sides (A)	Return on 3 Sides (B)	Return on 2 Sides	Supply on 4 Sides	Supply on 3 Sides (A)	Supply on 3 Sides (B)	Supply on 2 Sides		
E1-4-10	36	1	49	49	23	43	43	43	11	14	14	20	3/4	6
E1-4-15	36	1	49	49	43	43	43	62	16	20	20	29	3/4	6
E1-6-15	36	1	49	49	43	43	43	62	16	20	20	29	3/4	6
E2-4-20	42	1	55	55	35	43	43	66	18	23	23	34	3/4	7
E2-6-20	42	1	55	55	35	43	43	66	18	23	23	34	3/4	7
E2-6-25	42	1	55	55	43	62	62	82	22	28	28	42	3/4	7
E2-8-15	42	1	55	55	35	43	43	50	14	18	18	26	1	7
E2-8-20	42	1	55	55	35	43	43	66	18	23	23	34	1	7
E2-8-25	42	1	55	55	43	62	62	82	22	28	28	42	1	7
E2-10-20	42	1	55	55	35	43	43	66	18	23	23	34	1	7
E2-10-25	42	1	55	55	43	62	62	82	22	28	28	42	1	7
E3-8-30	48	1	61	61	62	62	62	102	24	32	32	46	1	8
E3-8-35	48	1	61	61	62	82	82	121	28	36	36	50	1	8
E3-10-30	48	1	61	61	62	62	62	102	24	32	32	46	1	9
E3-10-35	48	1	61	61	62	82	82	121	28	36	36	50	1	8
E3-15-25	48	1	61	61	62	62	62	82	20	26	26	39	1-1/4	8
E3-15-30	48	1	61	61	62	62	62	102	24	32	32	46	1-1/4	9
E3-15-35	48	1	61	61	62	82	82	121	28	36	36	50	1-1/4	8
E4-10-40	48	2	61	122	43	62	62	82	22	32	26	42	1	8
E4-10-45	48	2	61	122	62	82	62	102	24	36	28	46	1	9
E4-15-40	48	2	61	122	43	62	62	82	22	32	26	42	1-1/4	8
E4-15-45	48	2	61	122	62	82	62	102	24	36	28	46	1-1/4	9
E4-15-50	48	2	61	122	62	82	62	102	26	39	32	50	1-1/4	10
E4-20-35	48	2	61	122	43	62	62	82	20	28	23	36	1-1/4	8
E4-20-40	48	2	61	122	43	62	62	82	22	32	26	42	1-1/4	8
E4-20-45	48	2	61	122	62	82	62	102	24	36	28	46	1-1/4	9
E4-20-50	48	2	61	122	62	82	62	102	26	39	32	50	1-1/4	10
E4-20-55	48	2	61	122	62	82	82	121	29	42	34	58	1-1/4	10
E4-25-50	48	2	61	122	62	82	62	102	26	39	32	50	1-1/2	10
E4-25-55	48	2	61	122	62	82	82	121	29	42	34	58	1-1/2	10
E4-25-60	48	2	61	122	62	102	82	121	32	46	38	64	1-1/2	12
E4-30-60	48	2	61	122	62	102	82	121	32	46	38	64	2	12



Note: The typical outlet velocity through supply-air plenum grilles is 1,000 fpm.



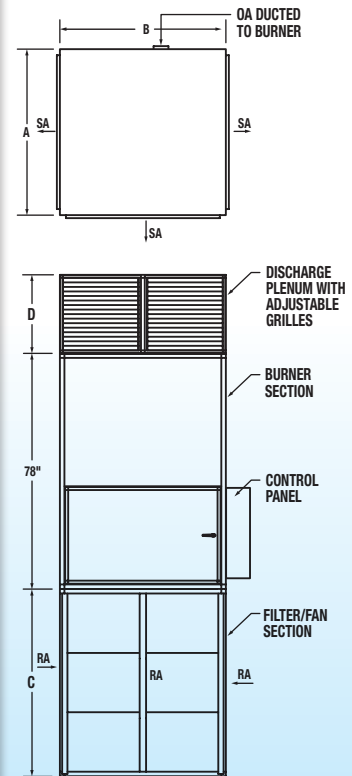
"A" Style 3-Sides Return/Supply Air



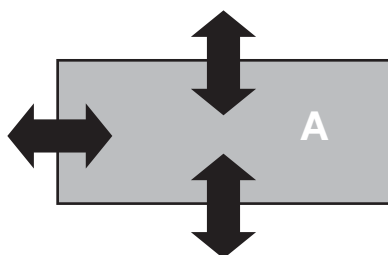
"B" Style 3-Sides Return/Supply Air

Dimensional Data - Continued

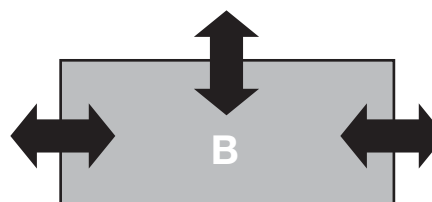
Model	Fan Size In. Dia.	Supply Air Fan Qty.	Dim. A Inches	Dim. B Inches	Dim. C, inches				Dim. D, inches				Gas Inlet, IPS	Outside Air Duct, In. Dia.
					Return on 4 Sides	Return on 3 Sides (A)	Return on 3 Sides (B)	Return on 2 Sides	Supply on 4 Sides	Supply on 3 Sides (A)	Supply on 3 Sides (B)	Supply on 2 Sides		
E5-20-60	54	2	75	150	62	82	62	102	25	36	30	48	1-1/4	12
E5-25-60	54	2	75	150	62	82	62	102	25	36	30	48	1-1/2	12
E5-30-60	54	2	75	150	62	82	62	102	25	36	30	48	2	12
E5-35-60	54	2	75	150	62	82	62	102	25	36	30	48	2	12
E5-25-70	54	2	75	150	62	97	82	121	29	42	34	58	1-1/2	10
E5-30-70	54	2	75	150	62	97	82	121	29	42	34	58	2	10
E5-35-70	54	2	75	150	62	97	82	121	29	42	34	58	2	10
E5-40-70	54	2	75	150	62	97	82	121	29	42	34	58	2	10
E5-30-80	54	2	75	150	82	113	82	141	32	48	38	66	2	10
E5-35-80	54	2	75	150	82	113	82	141	32	48	38	66	2	10
E5-40-80	54	2	75	150	82	113	82	141	32	48	38	66	2	10
E5-45-80	54	2	75	150	82	113	82	141	32	48	38	66	2	10
E5-35-90	54	2	75	150	82	121	97	160	36	50	44	74	2	12
E5-40-90	54	2	75	150	82	121	97	160	36	50	44	74	2	12
E5-45-90	54	2	75	150	82	121	97	160	36	50	44	74	2	12
E5-50-90	54	2	75	150	82	121	97	160	36	50	44	74	2-1/2	12
E6-45-90	60	2	82	164	66	102	82	128	34	50	40	68	2	12
E6-50-90	60	2	82	164	66	102	82	128	34	50	40	68	2-1/2	12
E6-45-100	60	2	82	164	82	121	82	141	37	56	44	76	2	12
E6-50-100	60	2	82	164	82	121	82	141	37	56	44	76	2-1/2	12
E6-55-100	60	2	82	164	82	121	82	141	37	56	44	76	2-1/2	12
E6-60-100	60	2	82	164	82	121	82	141	37	56	44	76	2-1/2	12
E6-50-110	60	2	82	164	82	128	97	160	40	62	48	82	2-1/2	12
E6-55-110	60	2	82	164	82	128	97	160	40	62	48	82	2-1/2	12
E6-60-110	60	2	82	164	82	128	97	160	40	62	48	82	2-1/2	12
E6-65-110	60	2	82	164	82	128	97	160	40	62	48	82	3	12
E6-55-120	60	2	82	164	97	141	102	175	44	68	50	88	2-1/2	12
E6-60-120	60	2	82	164	97	141	102	175	44	68	50	88	2-1/2	12
E6-65-120	60	2	82	164	97	141	102	175	44	68	50	88	3	12
E6-70-120	60	2	82	164	97	141	102	175	44	68	50	88	3	12



Note: The typical outlet velocity through supply-air plenum grilles is 1,000 fpm.



"A" Style 3-Sides Return/Supply Air



"B" Style 3-Sides Return/Supply Air